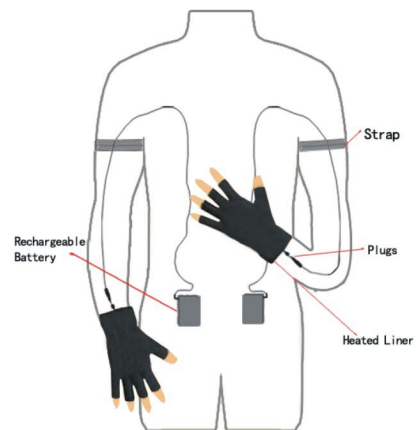
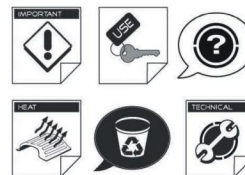


Operating Guide for Battery
Heated Liners



Operating Guide for Battery
Heated Liners



DIRECTIONS FOR USE

Thank you for choosing our Battery Heated Liners, which will turn any gloves/mitts into heated gloves/mitts. the liners have been designed to provide you with warmth anywhere, anytime, and maintain full freedom of movement. The unique heating system is based upon macromolecular compounds of fiber materials that are extremely efficient in generating heat from a low voltage source. These macromolecular compounds of fiber materials are sewn into the liners to provide warmth to your hands 4-6 hours per charge. The temperature can reach up to $55^{\circ}\text{C} \pm 5^{\circ}\text{C}$ or $130^{\circ}\text{F} \pm 8^{\circ}\text{F}$.

Applications

Skiers, snowboarders, bikers, snowmobilers, golfers, fishermen, hunters, campers, hikers, birdwatchers or anyone who enjoys cold weather outdoor activities. also great for arthritis, raynaud's, lupus, scleroderma, sjogren's, Myalgia or just poor circulation.

Check this package contains



photo1

Heated Liners: 1 pair
Lithium polymer batteries: 2 pcs
AC adapter: 1 pc
Charger: 1 pc
Car cigar lighter adapter: 1 pc
Extension Lines: 2 pcs
Straps: 2 pcs
User manual: 1 pc
(Should you find there are any missing components, please contact the distributor)

Getting Started

A . Charging the Batteries



photo 2



photo 3

The batteries must be charged in pair with the switch “On” . The charger can be hooked up To the AC adapter or Car cigar lighter adapter (see photo 2&3). Red light=Charging;Green light=Full charged.

Important precaution

- Do not attempt to charge incompatible types of rechargeable batteries as permanent damage to the battery and charger could result.
- Do not allow water, moisture or foreign objects into the charger.
- Do not block the air intake holes or the fan vent, which could cause the charger to overheat.
- Do not leave the charger unattended while charging. **Disconnect the battery and remove input power from charger immediately if the charger becomes hot!** allow the charger or battery to cool down before reconnecting.

- Do not place the charger or battery on a Flammable surface or near a flammable object while in use. Keep away from carpets, cluttered workbenches, etc.
- Always disconnect from power source when not in use.
- Do not recommend to leave the batteries in any vehicles for a long time when not in use, especially in the hot summer.
- Do not overcharge batteries as permanent damage could result. Do not use any chargers other than the one provided.
- Do not attempt to charge or discharge a battery if it is hot.
- Keep out of reach of children.

B . Connecting



photo 4

Firmly connect the batteries through the extension wires to the liner plugs. Turn switch “On” .

C . Care and Washing

- Batteries must be removed before washing.
- Gloves must be HAND WASHED separately in cold water and HANG DRIED only.
- DO NOT SOAK
- DO NOT WRING
- DO NOT BLEACH
- DO NOT IRON
- DO NOT DRY CLEAN
- DO NOT SMASH

D . Storage

- Keep the unit dry, away from dampness, extreme heat or strong sunlight.
- Charge the batteries to 60%
- Recharge the batteries one hour every 3 months

E . Trouble shooting.

- Wait a few minutes to feel the warmth.
The gloves produce gentle warmth, not a sudden burst of heat.
- Check that the liner plugs and extension wires firmly connect to the battery sockets.
- Check that the battery switch is “On”, and the light is green
- Check that the battery is charged

F . Warranties

120 Day Limited Warranty.

Liners are thoroughly inspected and tested before leaving the factory.

Liners when purchased from a United States retailer are warranted against defects in materials and/or workmanship under normal use for a period of one hundred twenty (120) days from date of purchase by the original purchaser. If a defect arises and a valid claim is received within the Warranty Period, at our option, we will either 1) repair the defect, using new or refurbished replacement parts, or 2) Replace the Liners with new ones that are ones that are at least functionally equivalent to the original gloves Liners