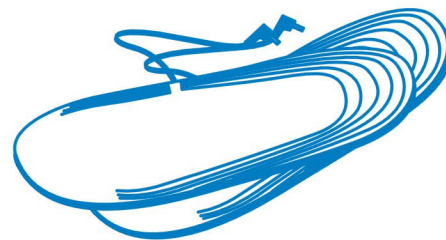
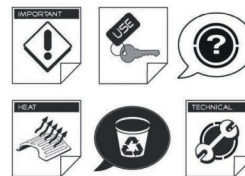


Operating Guide for
Battery Heated Insoles



Operating Guide for
Battery Heated Insoles



DIRECTIONS FOR USE

Thank you for choosing our Battery Heated Insoles, which have been designed to provide you with warmth anywhere, anytime, and **promote healthy blood circulation throughout your lower extremities.** The unique heating system is based upon macromolecular compounds of fiber materials that are extremely efficient in generating heat from a low voltage source. These macromolecular compounds of fiber materials are sewn into the insoles to provide warmth to your feet 6-8 hours per charge. the temperature can reach up to $42^{\circ}\text{C} \pm 3^{\circ}\text{C}$ or $108^{\circ}\text{F} \pm 5^{\circ}\text{F}$.

Applications

Skiers, snowboarders, bikers, snowmobilers, golfers, fishermen, hunters, campers, hikers, birdwatchers or anyone who enjoys cold weather outdoor activities. Also great for arthritis, Raynaud's, lupus, scleroderma, Sjogren's, myalgia or just poor circulation.

This package contains



photo 1

Heated insoles : 1 pairs
Battery Strap : 1 pairs
Velcro : 1 pair (to fix the wires in place)
Lithium polymer battery : 2 pcs
AC adapter : 1 pc
Charger : 1 pc
Car cigar lighter adapter: 1 pc
User manual : 1 pc
(Should you find there are any missing components, please contact the distributor)

Getting Started

A.Charging the Batteries



photo 2



photo 3

The batteries must be charged in pair with the switch “ On ” .The charger can be hooked up to the AC Aadapter or Car cigar lighter adapter (see photo 2 or 3). Red Light=Charging; Green Light=full charged.

Important precaution

- Do not attempt to charge incompatible types of rechargeable batteries as permanent damage to the battery and charger could result.
- Do not allow water, moisture or foreign objects into the charger.
- Do not block the air intake holes or the fan vent, which could cause the charger to overheat.
- Do not leave the charger unattended while charging. Disconnect the battery and remove input power from charger immediately if the charger becomes hot!! Allow the charger or battery to cool down before reconnecting.

- Do not place the charger or battery on a flammable surface or near a flammable object while in use. Keep away from carpets, cluttered workbenches, etc.
- Always disconnect from power source when not in use.
- Do not overcharge batteries as permanent damage could result. Do not use any chargers other than the one provided.
- Do not attempt to charge or discharge a battery if it is hot.
- Keep out of reach of children.

B . Trimming the Insoles

- Follow the printed lines to trim the insoles to the size of your boots or shoes. If you do not know the size, trim less to begin with. Do not cut in the marked heater area. The smallest size allowed is 8.

C . Connecting



Photo 4-1



Photo 4-2

- Wrap the battery straps outside your boots or legs; use the Velcro to make the wires neat and comfortable; firmly connect the batteries to the insole plugs. Turn switch “On” . (see photo4). Battery straps and wires must be covered under trousers.

D . Care and Washing

- Insoles must be HAND WASHED separately in cold water and HANG DRIED only.
- DO NOT WRING
- DO NOT BLEACH
- DO NOT IRON
- DO NOT DRY CLEAN
- DO NOT SMASH

E . Storage

- Keep the unit dry, away from dampness, extreme heat or strong sunlight.
- Charge the batteries to 60%
- Recharge the batteries one hour every 3 months

F . Trouble shooting.

- Wait a few minutes to feel the warmth. The Insoles produce gentle warmth, not a sudden burst of heat.
- Check that the insole plugs firmly connect to the battery sockets.
- Check that the battery switch in “On”, and the light is green
- Check that the battery is charged

G . Warranties

120 Day Limited Warranty.

Insole is thoroughly inspected and tested before leaving the factory.

Insoles when purchased from a United States retailer are warranted against defects in materials and/or workmanship under normal use for a period of one hundred twenty (120) days from date of Purchase by the original purchaser. If a defect arises and a valid claim is received within the Warranty period, at our option, we will either 1) repair the defect, using new or refurbished Replacement parts, or 2) replace the insoles with new ones that are at least functionally equivalent to the original insoles.